

VERTICAL MARKET FOCUS

# RENEWABLE ENERGY



LITTELFUSE	2
STAHLIN	4
PANDUIT	5
Cable Management	5
Identification	7
Power Connectors	8
Grounding	10
Safety	11
Atkore Unistrut	12
Sola HD	13
EV Charging Solutions	14
Contact Information	15

# SMR

GULF COAST

*Specified Manufacturers Representative*

## Overvoltage Protection

SPDs and Varistors for protecting equipment from overvoltage damage.

SPD2 Series  
Metal Oxide Varistors  
Surface Mount Multi-Level Varistors



## 1500 VDC Fuses and Fuse Holders

Fuses and fuse holders designed for 1500 VDC solar systems of varying amperages.

SPXC Series  
SPXV Series  
SPXI Series  
SPNH Series  
ESR Series  
 Designed for battery racks  
LFXV15 Series  
LFPXV Series



## 1000 VDC Fuses and Fuse Holders

Fuses and fuse holders designed for 1000 VDC solar systems of varying amperages.

SPFI Series  
SPF Series  
LPHV Series  
SPFJ Series  
LFJ1000 Series



## High Speed Fuses

1000 and 1500 VDC semiconductor fuses utilizing POWR-SPEED® technology for fast protection of sensitive equipment.

PSR Series  
 1000 VDC  
PSX Series  
 1500 VDC



## 600 VDC Fuses

Fuses designed for 600 VDC systems of varying amperages.

IDSR Series  
 Class RK5  
KLKD Series  
 Class Midget



## Arc-Flash Relays

Relays designed to protect against the dangers of arc flash

## AF0025 Series

Compact solution for combiner boxes and inverters



## Ground-Fault Protection Relays

Microprocessor based relays designed to protect against ground-fault in grounded systems.

## SE-601 Series

Adjustable pickup (1-20 mA)

Adjustable time delay (50-2.5 ms)

## EL731 Series

Adjustable pickup (30-5,000 mA)

Frequency range (0-90 Hz, 20-6,000 Hz)

Analog output (4-20 mA)

Adjustable time delay

Temperature sensor input

Network communication

Harmonic filtering

Universal power supply



## Distribution Blocks

Solar rated splicer and power distribution blocks.

## Power Distribution Blocks



## 100 VDC Fuses

Surface mount fuses designed with PV systems in mind. Reliable in high temperature environments.

## 400PV Series

Applications:

- Photovoltaic shingles
- Photovoltaic cells



## Switch Products

Design eliminates need for external bridging links (jumpers) to lower heat dissipation and save installation time.

## DC Disconnect

## Switches

## Class J Disconnects



## Temperature Sensors

Enables operating control and diagnostics for energy saving and system optimization.

## RTDs

## NTC Thermistors





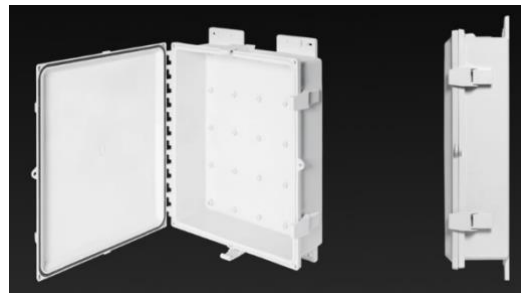
### PolyStar Series

Polycarbonate enclosures that are strong, easy to modify, and UV resistant of varying sizes.  
 Temperature range: -40°F to +248°F  
 UL 746C f1 rated.  
 Various accessories available.



### PolySlim Series

Lower profile enclosures for space saving where standard, deeper enclosures are not necessary.  
 Temperature range: -40°F to +248°F  
 UL 746C f1 rated.  
 Various accessories available.



### SolarShield™ HMI Cover

Provide protection for Human Machine Interface screens from the sun, water, dust, and other environmental conditions. Protects from glare to allow HMI screen to more easily be read outdoors. Inner doors allow for hands free use and additional glare protection.



### J Series Enclosures

Fiberglass enclosures that are strong, durable, and UV resistant of varying sizes.  
 Temperature range: -76°F to +274°F  
 UL 746C f1 rated.  
 Various accessories available.



# PANDUIT™

## Cable Management:

### Contractor Grade Edge Clip

Nylon 6.6 weather resistant material  
Compatible with frame thickness of  
0.7mm-3mm (0.028"-0.118")



### Stainless Steel Edge Clip

Compatible with panel thickness of  
0.051" to 0.098"  
Rolled edges prevent damage to  
cables



### Stronghold Fully Coated Stainless Steel Ties

Coating prevents damage to cables  
or corrosion between dissimilar  
metals.  
UV Resistant



### Nylon 612 Cable Ties

Weather resistant  
Superior UV Resistance  
Chemical Resistant (zinc chloride,  
calcium chlorides, dilute acids, etc.)  
20-year estimated life expectancy  
Wide temperature range for  
consistent outdoor high temperature  
environments (-76°F - 194°F)



### Nylon 6.6 Cable Ties

Weather resistant  
UV Resistant



## Cable Tie Tools

Standard ties:

GTS-E, GS2B-E, GTH-E, GS4H-E, PTS,  
PTH, PPTS, STS2, STH2

SS Ties:

GS4MT-E, HTMT, PPTMT, ST2MT,  
PBTMT

(Note that different strengths of tie  
may need different tools)



## UV Rated Corrugated Loom Tubing

Black Polypropylene material with  
substantial UV additives

-40° F - 185° F

Crush impact and abrasion  
protection for cable



## Stainless Steel Solar Wire Hanger

Support PV cable runs.

Able to latch and unlatch for  
maintenance.

Durable 304 stainless steel



## Cable Cleats

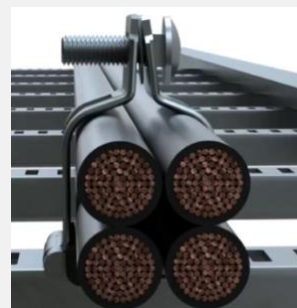
Contain wires from  
electromechanical forces at initial  
point of short circuit fault.

Protect personnel and property.

Ability to install after cable is laid.

Multiple forms: Quad, trefoil, single  
conductor.

Multiple materials: SS, Poly, Alum



## Identification:

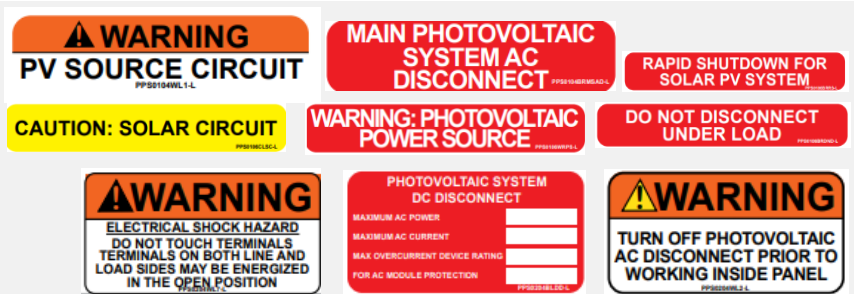
### Preprinted Solar Labels

Labels premade to comply with NEC code in photovoltaic applications.

UV Resistant

-40° F to 180° F

Variety of options



### MP300 Mobile Printer

Handheld printer that can print self-laminating labels, continuous labels, heat shrink labels and more with a variety of symbols.



### TDP43ME Desktop Printer

Printer that connects to your computer for an even more customizable printing solution.



### Nylon Marker Plates

TDP or MP



### Continuous Tape Labeling

TDP or MP

### Heat Shrink Labeling

TDP or MP



### Self-Laminating Labeling

TDP or MP

## Power Connectors:

### Aluminum Compression

#### Lugs

1-Hole and 2-Hole



### Copper Compression Lugs

1-Hole and 2-Hole

Long Barrel and Short Barrel

Flex conductor option

Narrow tongue option

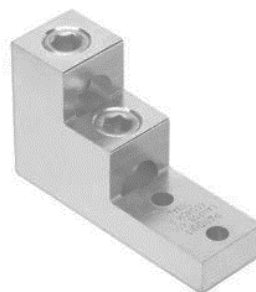


### Aluminum Splices



### Aluminum Mechanical Lugs

A variety of forms and sizes to fit a variety of needs



### Lay-in Lugs





## Terminals

Rings, forks, disconnects, and ferrules

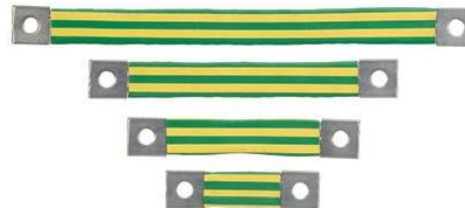


## Crimp Tools

For lugs, terminals, and splices  
Ergonomic controlled cycle hand tools for consistent crimp  
Battery powered hydraulic crimpers for consistent tool powered and controlled crimp.



## Braided Bonding Straps



## Grounding:

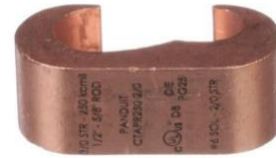
### GCE Series Grounding Connectors

Slotted design for easy assembly  
Antioxidant compound pre-applied  
Suitable for direct burial  
For ground rod, rebar, or conductors



### CTAPR Series Grounding Connectors

Suitable for direct burial  
For ground rod, rebar, or conductors



### Split Bolt Connectors

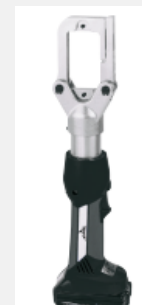


### Service Post



### Crimp Tools

Battery powered hydraulic crimpers for consistent tool powered and controlled crimp.



# Safety:

## Detectable Tape



## Electrical Tape

Suitable for a wide range of indoor and outdoor applications and temperatures.



## Lockout Tagout

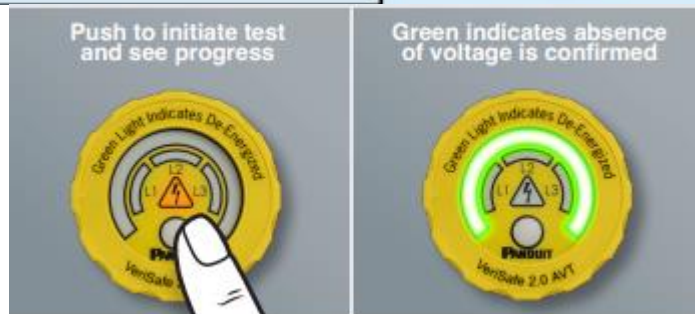
Tags, padlocks and more



## Verisafe 2.0 AVT

1000 VDC

Network module available for real-time diagnostics



# Atkore™

## Unistrut

### Unistrut Channel

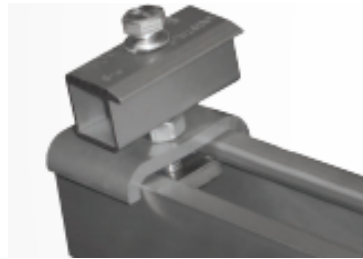
Special double anodized aluminum channel for UV resistance  
Channel and accessories provide an ideal racking system for solar panels

Made in the USA - BUY AMERICA



### Solar End Clamp

End-clamp design for use with strut-based racking system  
End-stop feature allows use with vertical strut  
Meets uplift loads of 350 lbs



### Solar Mid-Clamp

Mid-clamp design allows use with strut-based racking system  
Provides .8" (21 mm) panel spacing  
Meets spacing requirements of WEEB-WMC  
Meets uplift loads of 350 lbs





## Customizable Transformers

Up to 600V

Popular in EV Infrastructure

Available in NEMA 1, 3R, 4, 4X

Made in the US



## SDU-B Series DC UPS

Temperature range:  $-15^{\circ}\text{C}$  to  $+50^{\circ}\text{C}$

Commonly used in wind turbine controls

Power quality solution to keep control systems powered during brief outages and avoid damage



## AC to DC Power Supplies

For control systems

### SDN-D Series

Temperature range:  $-40^{\circ}\text{C}$  to  $+70^{\circ}\text{C}$

IIoT with SCM Communication module

Ultra-high efficiency

### SDN-C Series

Temperature range:  $-40^{\circ}\text{C}$  to  $+70^{\circ}\text{C}$

High efficiency



# EV CHARGING SOLUTIONS

## BreezeEV

Electric vehicle charging equipment  
Networking option  
RFID Capability  
Multiple mounting options  
Customizable labeling

\*Louisiana and Mississippi only\*



## PayEnergy

Electric vehicle charging equipment  
Payment kiosks and software  
Multiple manufacturers of chargers

- ABB
- PayEnergy
- Siemens
- More!

US made chargers available for government grants for EV infrastructure

\*Texas and Oklahoma only\*





13639 Aldine Westfield Rd

Houston TX 77039

☎ 346-409-2500

[smrgulfcoast.com](http://smrgulfcoast.com)

*Specified Manufacturers Representative*

TERRITORY MANAGERS	PHONE	LOCATION	EMAIL ADDRESS
Eric Gerberman	713-724-2356	Greater Houston, Beaumont	<a href="mailto:egerberman@smrgulfcoast.com">egerberman@smrgulfcoast.com</a>
Travis Graham	281-639-3252	Greater Houston	<a href="mailto:tgraham@smrgulfcoast.com">tgraham@smrgulfcoast.com</a>
Sterling Hannsz	432-940-8004	Austin	<a href="mailto:shannsz@smrgulfcoast.com">shannsz@smrgulfcoast.com</a>
Dillion Hargrove	580-678-7696	Texas Panhandle, Oklahoma	<a href="mailto:dhargrove@smrgulfcoast.com">dhargrove@smrgulfcoast.com</a>
Braden Hazelwood	432-302-1185	W. Texas	<a href="mailto:bhazelwood@smrgulfcoast.com">bhazelwood@smrgulfcoast.com</a>
Thom Hughes	337-304-1458	Lake Charles, Sulphur, Beaumont	<a href="mailto:thughes@smrgulfcoast.com">thughes@smrgulfcoast.com</a>
Chris Janik	512-925-9183	Austin, Waco, College Station	<a href="mailto:cjanik@smrgulfcoast.com">cjanik@smrgulfcoast.com</a>
Joel Knutowski	817-823-2076	Dallas, N. Texas	<a href="mailto:jknutowski@smrgulfcoast.com">jknutowski@smrgulfcoast.com</a>
Billy Lemons	903-330-6520	E. Texas, NW Louisiana	<a href="mailto:blemons@smrgulfcoast.com">blemons@smrgulfcoast.com</a>
Ryan McConnell	225-270-8808	Baton Rouge, New Orleans, MS	<a href="mailto:rmccconnell@smrgulfcoast.com">rmccconnell@smrgulfcoast.com</a>
Ryan Reed	325-260-0554	W. Texas, SE New Mexico	<a href="mailto:rreed@smrgulfcoast.com">rreed@smrgulfcoast.com</a>
Bob Strahan	432-528-8193	W. Texas, SE New Mexico	<a href="mailto:bstrahan@smrgulfcoast.com">bstrahan@smrgulfcoast.com</a>
Steve Willoughby	210-863-6011	San Antonio, Corpus Christi, Victoria	<a href="mailto:swilloughby@smrgulfcoast.com">swilloughby@smrgulfcoast.com</a>

#### INSIDE SALES

Jim Balow	346-409-2502	Inside Sales - Team Leader	<a href="mailto:jbalow@smrgulfcoast.com">jbalow@smrgulfcoast.com</a>
Andrew Cochrane	346-409-2506	Inside Sales	<a href="mailto:acochrane@smrgulfcoast.com">acochrane@smrgulfcoast.com</a>
Nash Danford	346-409-2512	Inside Sales	<a href="mailto:ndanford@smrgulfcoast.com">ndanford@smrgulfcoast.com</a>
Blake DelaMater	346-409-2509	Inside Sales	<a href="mailto:bdelamater@smrgulfcoast.com">bdelamater@smrgulfcoast.com</a>
Clark Draughn	346-409-2508	Inside Sales	<a href="mailto:cdraughn@smrgulfcoast.com">cdraughn@smrgulfcoast.com</a>
Taylor Travis	346-409-2505	Inside Sales	<a href="mailto:ttravis@smrgulfcoast.com">ttravis@smrgulfcoast.com</a>
Chris Ware	346-409-2503	Inside Sales	<a href="mailto:cware@smrgulfcoast.com">cware@smrgulfcoast.com</a>

#### SALES SUPPORT

Diane Chavarria	346-409-2514	Customer Service	<a href="mailto:dchavarria@smrgulfcoast.com">dchavarria@smrgulfcoast.com</a>
Idalia Palos	346-409-2500	Customer Service	<a href="mailto:ipalos@smrgulfcoast.com">ipalos@smrgulfcoast.com</a>
Collette Steward	346-409-2507	Customer Service	<a href="mailto:csteward@smrgulfcoast.com">csteward@smrgulfcoast.com</a>

#### MANAGEMENT TEAM

Sarah Barker	713-882-1201	Sales Operations	<a href="mailto:sbarker@smrgulfcoast.com">sbarker@smrgulfcoast.com</a>
Rob Breuhl	713-598-8149	Reg Mgr LA - MS	<a href="mailto:rbreuhl@smrgulfcoast.com">rbreuhl@smrgulfcoast.com</a>
Philip Gomez	979-575-5116	Reg Mgr S. Texas	<a href="mailto:pgomez@smrgulfcoast.com">pgomez@smrgulfcoast.com</a>
Jamey Lamm	817-372-8833	Mktg & Key Accts + OK	<a href="mailto:jlamm@smrgulfcoast.com">jlamm@smrgulfcoast.com</a>
Carl Morgan	214-675-5639	Reg Mgr N. Texas	<a href="mailto:cmorgan@smrgulfcoast.com">cmorgan@smrgulfcoast.com</a>

#### PRINCIPALS

Matt Kinchen	832-326-4538	<a href="mailto:mkinchen@smrgulfcoast.com">mkinchen@smrgulfcoast.com</a>
David Russell	832-868-5625	<a href="mailto:drussell@smrgulfcoast.com">drussell@smrgulfcoast.com</a>